

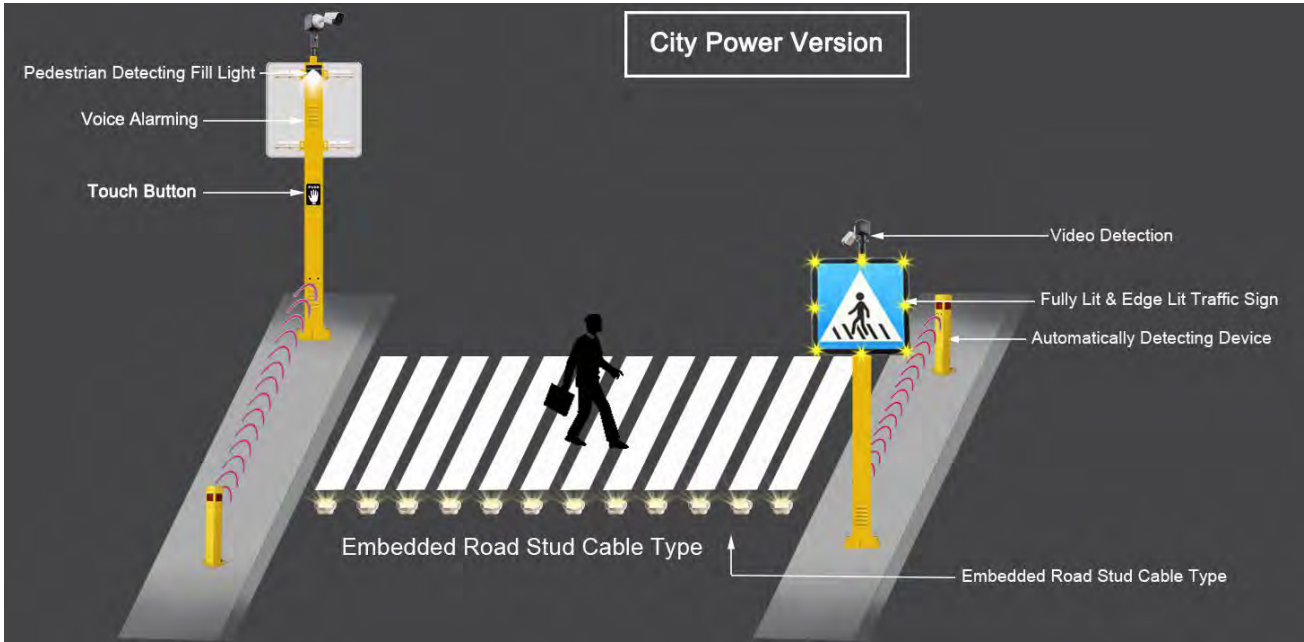
# SMART PEDESTRIAN SYSTEM

## — URBAN TYPE



## Contents

URBAN TYPE VERSION.....	3
1.FUNCTION.....	3
2.FEATURES.....	3
3.APPLICATION.....	3
ACCESSORIES OF URBAN TYPE VERSION.....	4
ACCESSORIES-INDUCTION PART.....	4
1.PEDESTRIAN INTELLIGENT INTEGRATED BOLLARD(Main Bollard).....	4
2.PEDESTRIAN INTELLIGENT INTEGRATED BOLLARD(Sub-Bollard).....	4
3.VIDEO DETECTION.....	5
INTELLIGENT PEDESTRIAN SYSTEM CONTROL MODULE.....	5
ACCESSORIES-WARNING PART.....	5
1.FULLY LIT & EDGE LIT TRAFFIC SIGN.....	5
2.EMBEDDED ROAD STUD.....	5
ACCESSORIES-POWER SUPPLY PART.....	6
1.CITY POWER.....	6
ELLUMIN CLOUD PLATFORM.....	6
DESCRIPTION.....	6
FUNCTION.....	6
CONSTRUCTION DRAWING.....	9
Q & A.....	10



The drivers have blind spots and the traditional pedestrian signs have bad warning effect. These two severe problems have survived for a long time which cause many of the terrifying traffic accidents. ELLUMIN company faces challenges, improves technology, optimizes product for solving remained unsolved traffic problems.

The Smart Pedestrian Crossing Sign adopts a new technology of fully lit & edge lit. Infrared sensing system detect pedestrian movement for actuating warning system & illuminated system.

### 1. FUNCTION

#### 1.1 At day:

-The system is dormant when doesn't detect pedestrians.

-When the sidewalk system is triggered, the pedestrian sign and the embedded road studs will flash simultaneously, the voice alarming will turn on.

#### 1.2 At night:

-The system is dormant when doesn't detect pedestrians. Traffic Sign's surface lighting function and Pedestrian Detecting Fill Light function will open at dusk.

-When the sidewalk system is triggered, the pedestrian sign and the embedded road studs will flash simultaneously, the voice alarming will turn on.

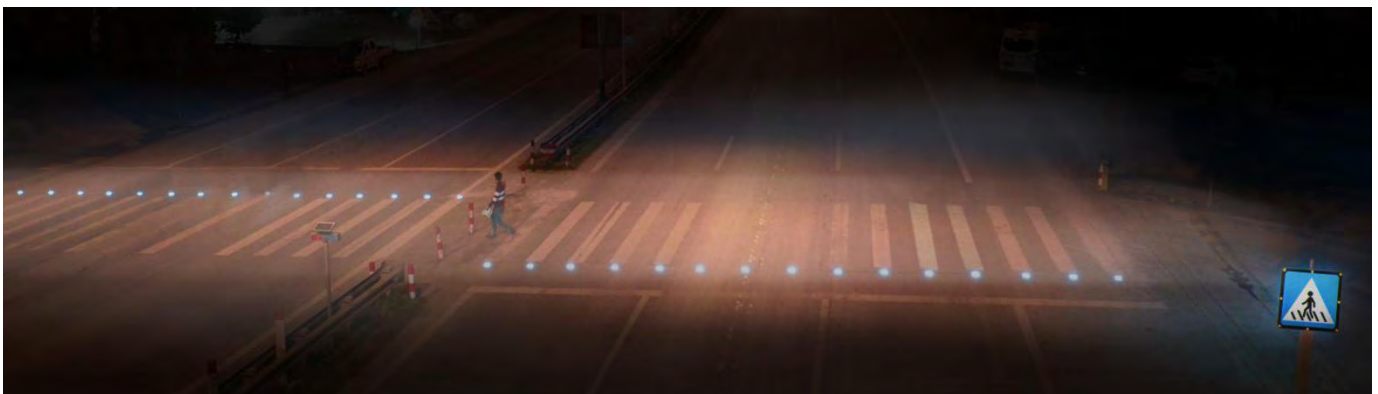
### 2. FEATURES

2.1 Three patterns of activating way: Automatically Detecting Device, Video Detection & Touch Button to ensure the system.

2.2 Fully Lit & Edge Lit Sign has flash function which has excellent visibility and outstanding warning effect for drivers.

2.3 Voice Alarming can use custom voice for warning drivers and pedestrians.

### 3. APPLICATION

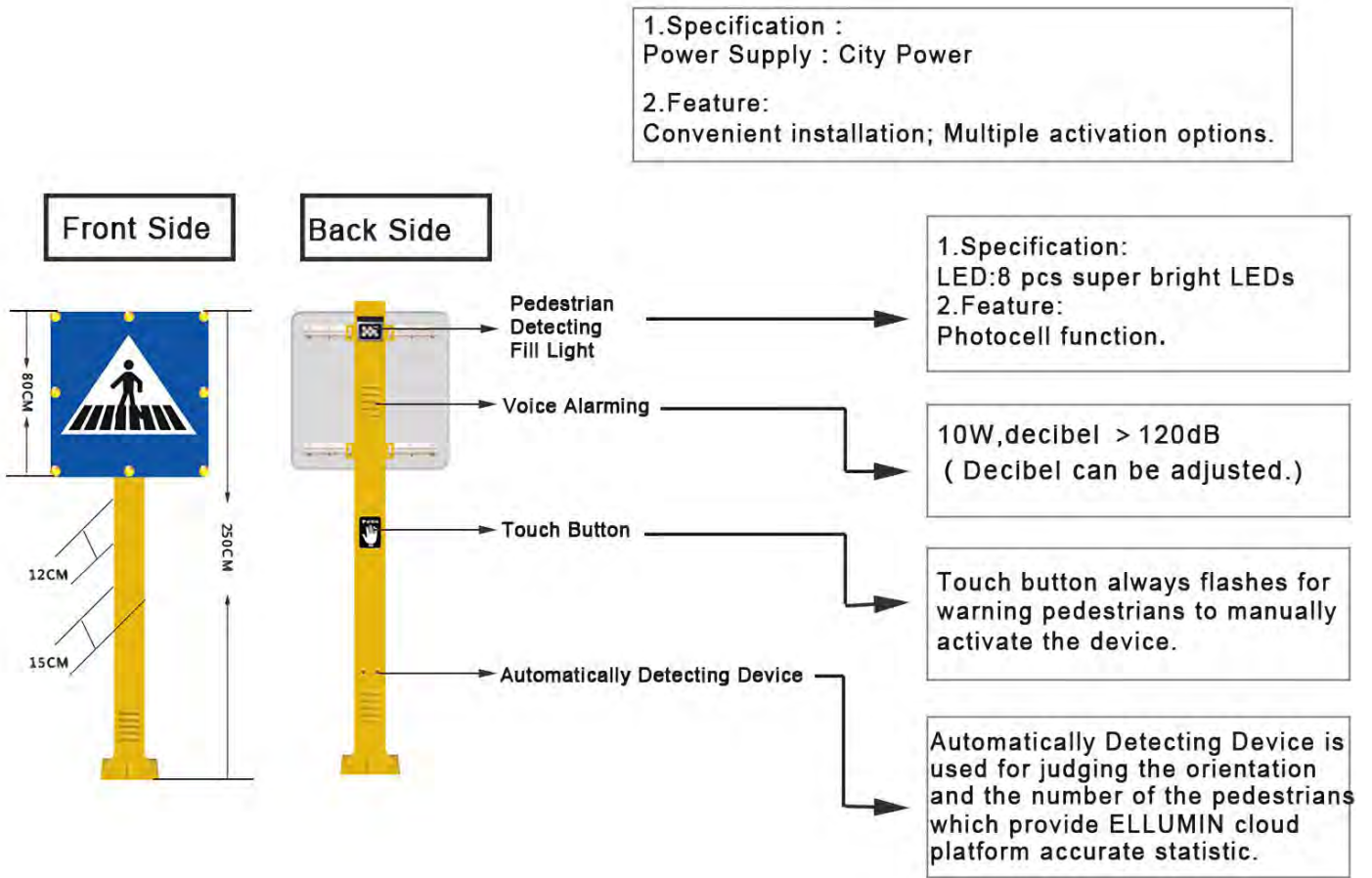




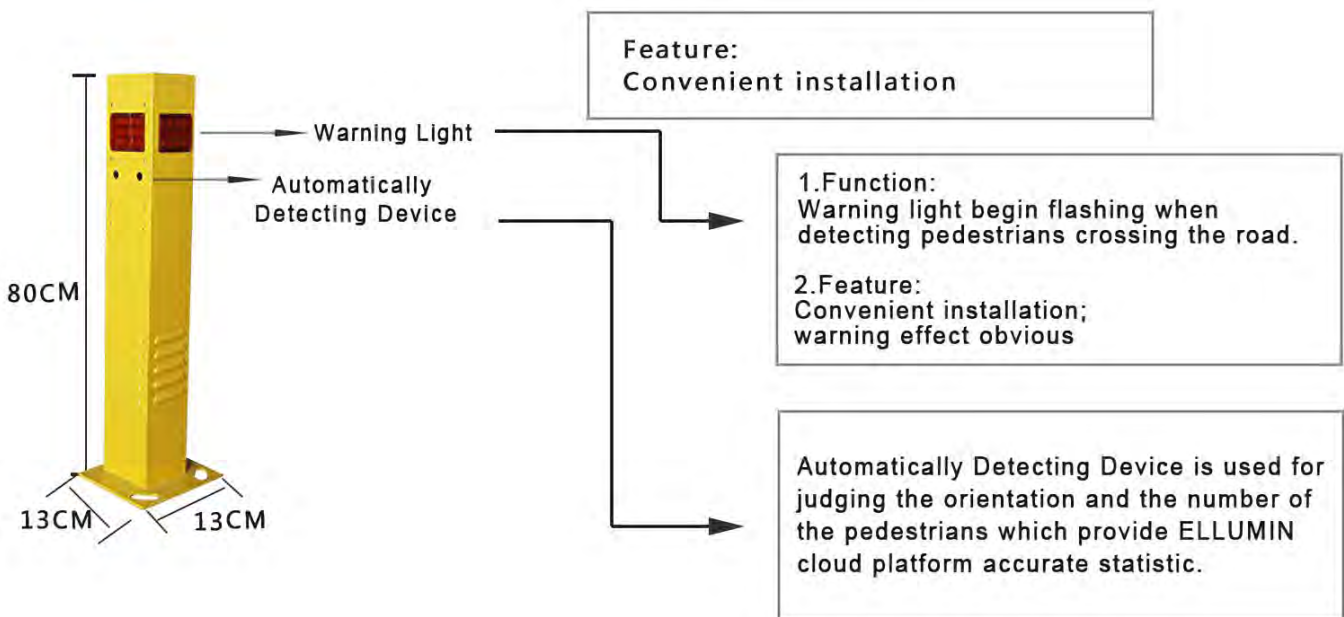
## ACCESSORIES OF URBAN TYPE VERSION

### ACCESSORIES-INDUCTION PART

#### 1. PEDESTRIAN INTELLIGENT INTEGRATED BOLLARD(Main Bollard)



#### 2. PEDESTRIAN INTELLIGENT INTEGRATED BOLLARD(Sub-Bollard)



### 3.VIDEO DETECTION



The system is automatically activated when capturing human face or body passing through the detection area.

### INTELLIGENT PEDESTRIAN SYSTEM CONTROL MODULE

The control module is for ensuring the system effective operation and upgrading the system operation efficiency.It integrates two core functions in one that receive activation signals from activation equipment and send working instructions to the warning equipment. And it can also satisfies the need of customized functionalities of the system.

### ACCESSORIES-WARNING PART

#### 1.FULLY LIT & EDGE LIT TRAFFIC SIGN



Traditional traffic signs have short visibility distances, and the static warning effect is poor.

ELLUMIN company put the fully lit & edge lit technology on traffic sign,it not only increases the visual distance, but also add flash function to warn drivers yield people who are crossing the crosswalk.

##### 1.1 Specification

- High level light trans missive Acrylic board.
- 8 pcs super bright LEDs.
- Aluminium-plastic panel, durable which is hard to bend.
- Avery 6600T reflective film.
- Power by DC12V.
- Size and pattern can be customized.

##### 1.2 Features

Fully lit:The pedestrian sign will automatically lighting at night for increasing the awareness of drivers.

Simultaneous flash LEDs - Greater increases drivers awareness in high-risk,and high-accident intersections.

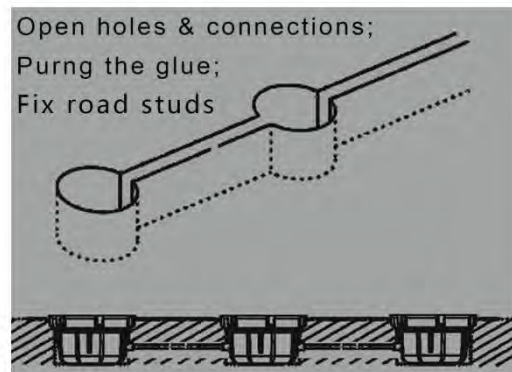
Slim design:The thickness has no difference with the normal aluminum sign;Convenient installation.

Aluminum wrapping edge - Pattern design: New advanced anti-oxidation Aluminum wrapping edge, 2-3 times durable than old silicon wrapping, effectively extend the life time.

#### 2.EMBEDDED ROAD STUD



BL-004CA-P



##### 1.Specification

- Size: φ170\*98.2mm
- LEDs:8 pcs super bright LEDs +2 pcs LED light board
- Power Supply:DC12V

##### 2.Features

- Have the bi-directionality warning function which for drivers and pedestrians.
- Robust Construction,suitable for harsh conditions.
- Possibility of integration with enforcement systems.
- Low maintenance.
- Easy Replacement:base(fixed in the pavement),main body(removable).

## ACCESSORIES-POWER SUPPLY PART

### 1.CITY POWER

#### 1.1 Specification

- 110V-240V.

#### 1.2 Features

- Suitable for use in poor solar energy areas.
- No worry about the system's power supply during the rainy season.

## ELLUMIN CLOUD PLATFORM

### DESCRIPTION

ELLUMIN cloud platform is an important part of the smart city which can monitor the operation of the devices, as well as collect and analyze the devices' statistic for you.

### FUNCTION

#### 1.MONITORING DEVICE

Monitoring device's operation and display in map pattern,and support to filter the dedicated device.

The screenshot displays the ELLUMIN Cloud Platform interface. At the top, there is a navigation bar with the ELLUMIN logo and menu items: APPLICATION, DEVICE MANAGEMENT, ALL ALARMS, and USERS. A 'TEST' button with a user icon is also present. Below the navigation bar, there are four main dashboard cards: 'Devices' (27), 'Device Location' (27), 'Alarms' (19), and 'User Info' (0). Each card has a 'View All' link. Below these cards, a map shows the location of devices, with a pop-up window displaying details for a specific device: ID: 030301000001d5, Longitude: 120.58216920525331, Latitude: 30.452366641574756, Type: Point surface emitting screen, Temperature: 12, BTEMP: 12, Voltage: 12470, Cut-Off Voltage: 14100. Below the map is a search bar for 'Query Device' with filters for 'Device Name' and 'ID'. At the bottom, there is a table listing devices.

Type	Device Name	Device Status	Notification Status	Electronic Label
	Lianzhongcun1			
	Lianzhongcun2			



## 2.ONLINE CONTROL DEVICE

Remotely change the operating status of the device online.

## 3.PROGRAMMABLE CONTROL

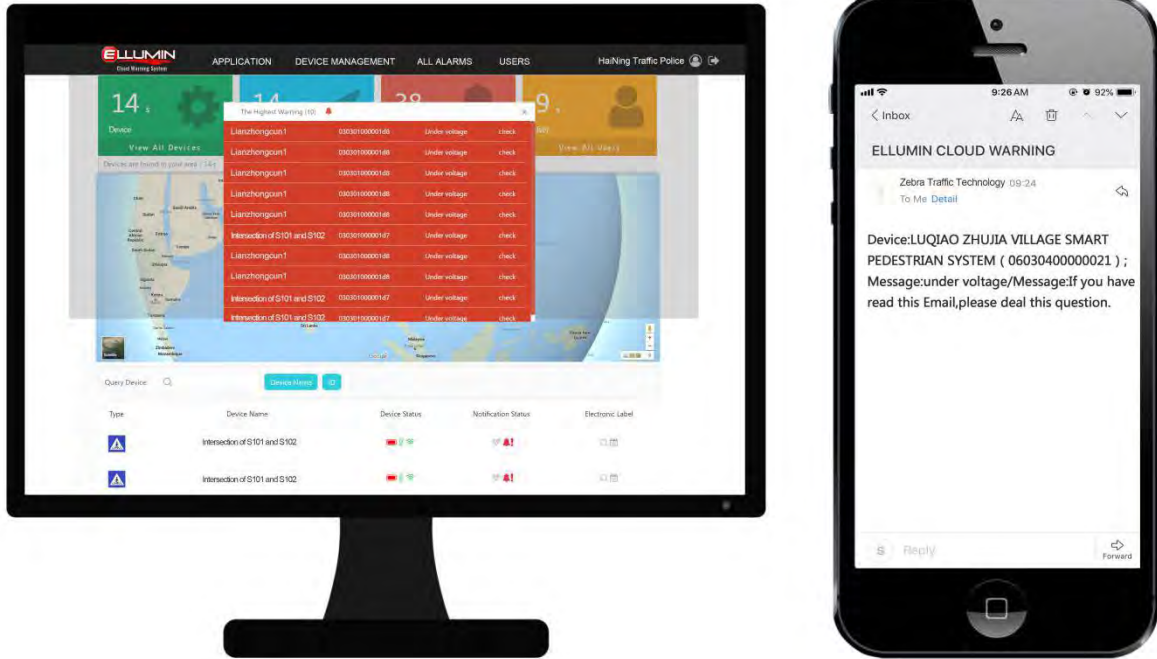
Customize Calendar Editor is easy to schedule Manage devices.

(Based on the Calendar Year with the Ability to Program in Holidays and Daylight Savings Time,Ideal for School, Business and Industrial Facility Work Schedules)

Sun.	Mon.	Tue.	Wed.	Thu.	Fri.	Sat.
28	29	30	31	1	2	3
4	5	6	7	8	9	10
11	12	13	14	15	16	17
18	19	20	21	22	23	24
25	26	27	28	29	30	1
2	3	4	5	6	7	8

## 4. EMERGENCY NOTIFICATION

When a traffic emergency occurs or there is something wrong with the device, workers will immediately receive the notifications through E-mail and web page.



## 5. DATE REPORTING

- 5.1 It can generate professional data reports by capturing, filtering, summarizing, analyzing and summarizing the data of the day.
- 5.2 Provide strong data support by historical data exported to EXCEL in chronological order.



Current equipment is: Lianzhongcun (030301000001cf)

Select date:  Search

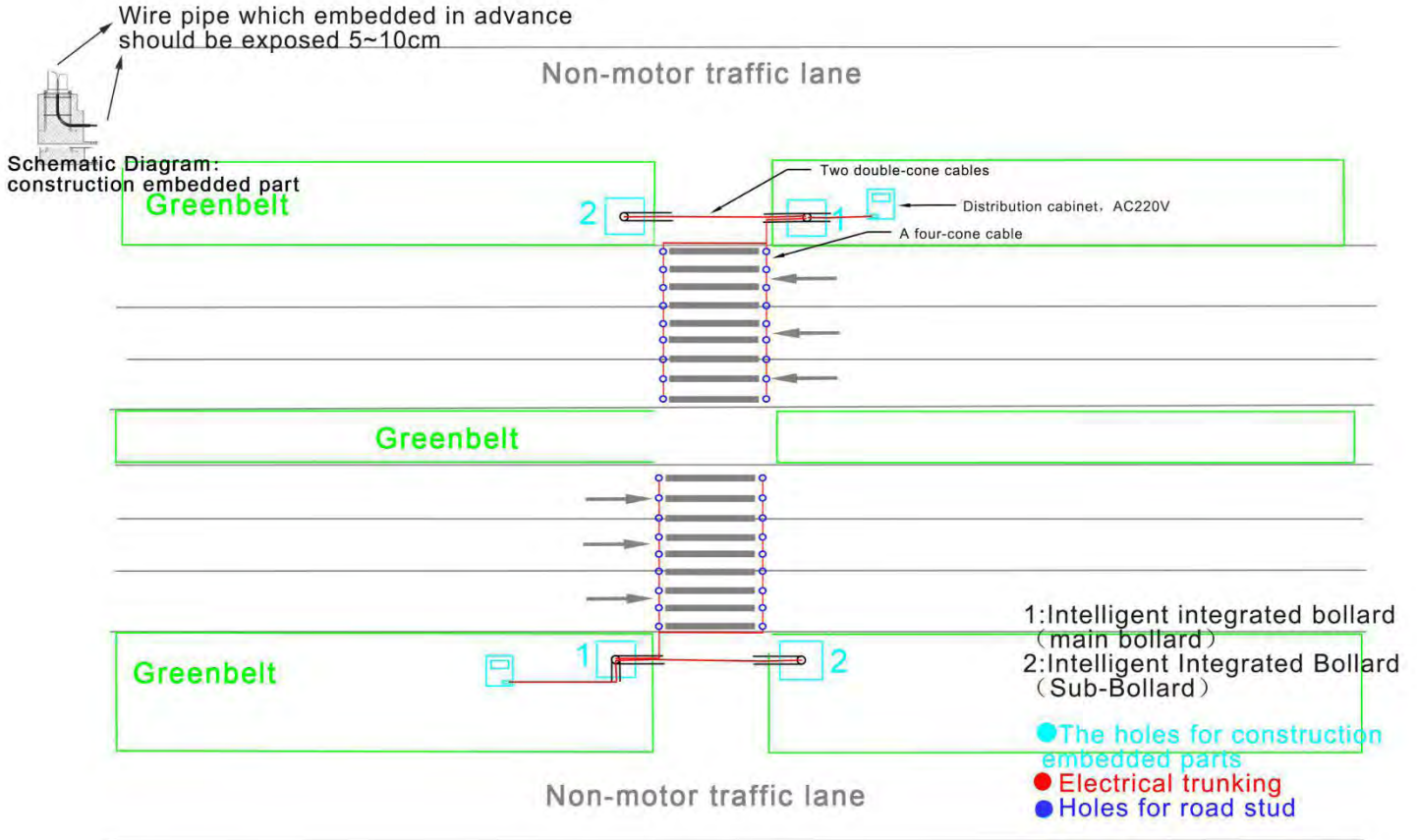
Time	electric current (mA)	Delay Time (S)	Duty Cycle (%)	visitors flowrate (...)	UploadInterval(*1...	Temperature(°C)	voltage (v)
2018-11-02 01:41...	0	20	50	0	6	12	12.70
2018-11-02 01:09...	0	20	50	0	6	12	12.72
2018-11-02 00:08...	0	20	50	0	6	14	12.73
2018-11-01 23:07...	0	20	50	6	6	14	12.76

TOTAL ITEM: 244 PREV 1 2 3 ... 25 NEXT > 10 Item/Page

[Export Table](#)



# PRODUCT SPECIFICATION CONSTRUCTION DRAWING



## Q & A

### Q1.What is the intelligent pedestrian system?

The intelligent pedestrian system can accurately detect the movement of pedestrian when they are crossing the crosswalk to actuate the voice alarm system and the illuminate system(The illuminate system is consist of two parts:Flash pedestrian sign and embedded road studs) .

These two useful system warn drivers to slow down for yielding pedestrians as well as pedestrian should be cautious when cross the zebra crossing.

### Q2.Is the embedded road stud pressure resistant?

Our company specially develop the embedded road stud for the severe challenge that the road stud located in the central line of the road is easy to be rolled by cars.

The road stud is approximately flush with the road surface after finishing installation which the pressure resistant degree can be around 30T.

### Q3.How the detection technology to work?

There are three patterns of detection systems.

3.1 Infrared radiation detection system:This system is like to install an infrared gate at the crosswalk:When the pedestrian cross the infrared the intelligent pedestrian system will be actuated.

3.2 Camera detection system:The camera can detect the pedestrian on the crosswalk:The intelligent will be actuated at once the pedestrian entered the detection area.

3.3 Infrared thermal imaging detection system:The infrared can induce the body temperature to actuate the intelligent pedestrian system.(The system will analyze the movement of the pedestrian to distinguish the pedestrian who cross the road with the other people in advance.)

### Q4.How long is the construction period?

The construction period is around only 1 day for a two-way four-lane road.

### Q5.How about the construction damage to the road surface?

We only drill the hole which diameter is 170MM,height is 90MM and then fill up the hole through the specialized glue for ensuring the road can be restored to their original.

If the road stud is the wiring type we should only cut a slot which width is 12MM,height is 50MM.

### Q6.How about the electrical safety?

We adopt DC 24V voltage and 3M waterproof connector for the electrical safety.