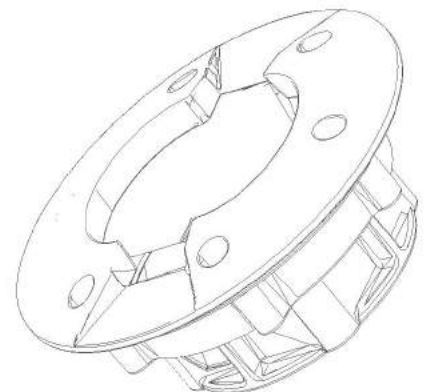




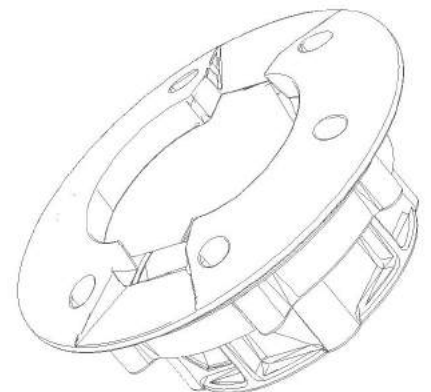
BL-002CA

EVERY LITTLE LIGHT FOR SAFETY



Contents

Contents.....	2
1 Scope.....	3
2 Products Description.....	3
2.1 Features.....	3
2.2 Mechanical.....	3
2.3 Electrical.....	3
2.4 Optical.....	3
3 Structure Diagram.....	4
4 Installation.....	4
4.1 Applicable Place.....	4
4.2 Installation Method.....	4
4.3 Installation Considerations.....	5
5 After-sales Services.....	5
5.1 Warranty:.....	5



1 Scope

This specification covers the detailed Specification and Performance for the following products listed as below:

2 Products Description

2.1 Features

- 2.1.1 Low maintenance.
- 2.1.2 Variable distance cables.
- 2.1.3 Outstanding visibility during the day and at night.
- 2.1.4 Operation Mode: Flashing, Steady, Synchronous flash/Sequential flash(optional).
- 2.1.5 Robust construction, suitable for harsh conditions.
- 2.1.6 Top cover protected by polycarbonate window.
- 2.1.7 Water proof: IP68
- 2.1.8 Photocontrol, automatic on at dusk ,off at dawn, save energy, friendly to the environment(Customization).
- 2.1.9 Possibility of integration with enforcement systems.
- 2.1.10 Special hard anodization coating available - 3 times durable than normal coating(optional).



2.2 Mechanical

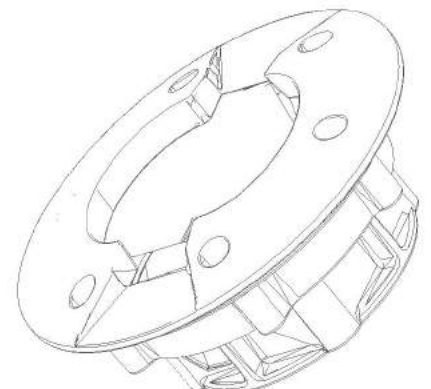
- 2.2.1 Material: Aluminum
- 2.2.2 Top Protective Cover Material: Polycarbonate
- 2.2.3 Mechanical Resistance: ≥ 30 Tons Truck
- 2.2.4 Diameter: $\varnothing 145\text{mm}$
- 2.2.5 Height: 64mm
- 2.2.6 Product Weight: 740g
- 2.2.7 Waterproof Level: IP68
- 2.2.8 Operation Mode: Flashing, Steady, Synchronous flash/Sequential flash(Customization).
- 2.2.9 Work Temperature: -20°C to $+70^{\circ}\text{C}$

2.3 Electrical

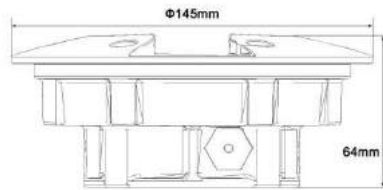
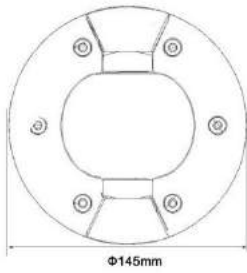
- 2.3.1 Power Supply: DC12V or DC24V
- 2.3.2 Cable Length: 30cm or custom length

2.4 Optical

- 2.4.1 LED Qty: 4 LEDs
- 2.4.2 LED Type: $\varnothing 5\text{mm}$
- 2.4.3 Color Optional: Red, blue, yellow, white, green
- 2.4.4 Visual Distance: 500M



3 Structure Diagram



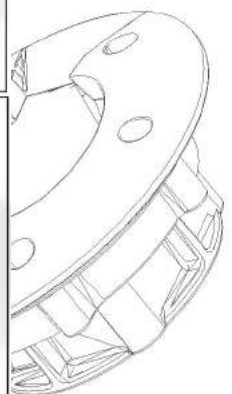
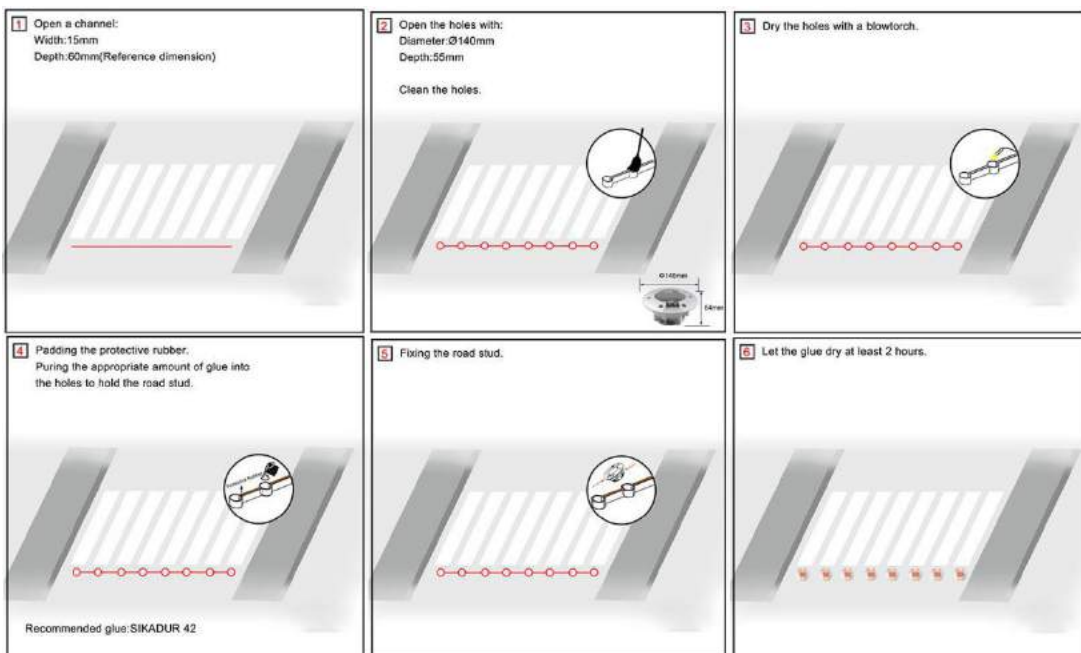
4 Installation

4.1 Applicable Place

- Greenways
- Pedestrian walkway
- Delineation of roads
- Motorways
- Illumination of public spaces (bicycle paths, pedestrian zones, etc ...)
- Decorative illumination

4.2 Installation Method

- 4.2.1 Isolate all power before commencing installation.
- 4.2.2 The road surface should be level and even ,any repair to the surface should be conducted prior to installation.
- 4.2.3 Cut a channel between holes approximately 15mm wide to a depth of 60mm,ensure the channel is cleaned of all debris.
- 4.2.4 Boring a specific size hole at the placement location of the road stud that should be Ø140mm*55mm.
- 4.2.5 Use a blowtorch to dry any dampness from the holes,failure to do so may result in the adhesive glue not bonding correctly.
- 4.2.6 Insert the protective rubber padding into the channel once it has been dried and had time to cool down.
- 4.2.7 Pour the adhesive glue into the hole and locate the road stud so that its lighted side is facing towards to drivers.
- 4.2.8 Inspect studs 2 hours after installation and re-adjust if there has any movement.
- 4.2.9 Inspect after 4 hours and check that all studs are firmly located and show no signs of movement, if all have set correctly re-instate power.



4.3 Installation Considerations

4.3.1 Installation depth 55mm

4.3.2 Other: Ensure any water is removed prior to commencing maintenance.
Use the epoxy supplied for best result.

5 After-sales Services

5.1 Warranty: 1 year

