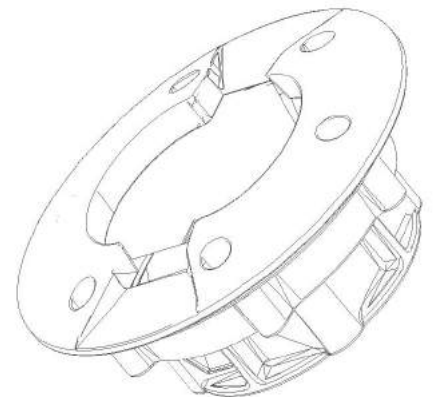




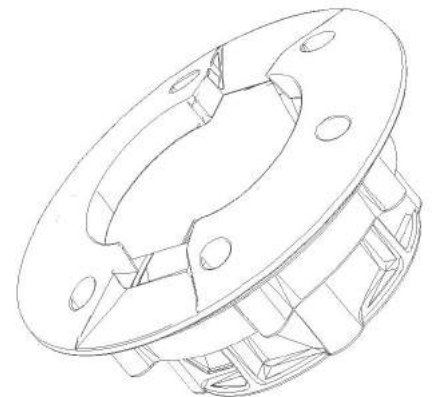
BL-002SU

EVERY LITTLE LIGHT FOR SAFETY



Contents

Contents.....	2
1 Scope.....	3
2 Products Description.....	3
2.1 Features.....	3
2.2 Mechanical.....	3
2.3 Electrical.....	3
2.4 Optical.....	3
3 Structure Diagram.....	4
4 Installation.....	4
4.1 Applicable Place.....	4
4.2 Installation Method.....	4
4.3 Installation Considerations.....	5
5 After-sales Services.....	5
5.1 Warranty:.....	5
5.2 Safe Storage Remind:.....	5



1 Scope

This specification covers the detailed Specification and Performance for the following products listed as below:

2 Products Description

2.1 Features

- 2.1.1 Low maintenance.
- 2.1.2 Outstanding visibility during the day and at night.
- 2.1.3 Operation Mode: Flashing, Steady, Synchronous flash/Sequential flash(optional).
- 2.1.4 Robust construction, suitable for harsh conditions.
- 2.1.5 Top cover protected by polycarbonate window.
- 2.1.6 Water proof: IP68
- 2.1.7 Photocontrol, automatic on at dusk ,off at dawn, save energy, friendly to the environment.
- 2.1.8 External magnet switch(optional): Activate or deactivate the road stud with this optional feature without having to access internal components.
- 2.1.9 Special hard anodization coating available - 3 times durable than normal coating(optional).

2.2 Mechanical

- 2.2.1 Material: Aluminum
- 2.2.2 Top Protective Cover Material: Polycarbonate
- 2.2.3 Mechanical Resistance: ≥ 30 Tons Truck
- 2.2.4 Diameter: $\varnothing 145\text{mm}$
- 2.2.5 Height: 64mm
- 2.2.6 Product Weight: 740g
- 2.2.7 Waterproof Level: IP68
- 2.2.8 Operation Mode: Flashing, Steady, Synchronous flash/Sequential flash(Customization).
- 2.2.9 Work Temperature: -20°C to $+70^{\circ}\text{C}$

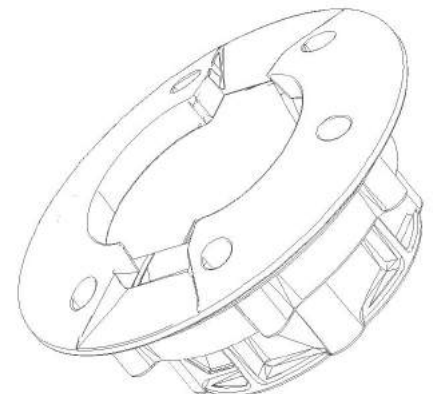


2.3 Electrical

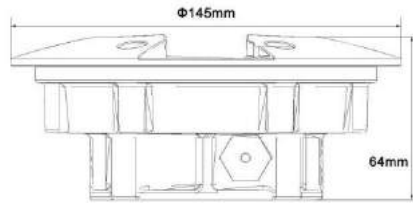
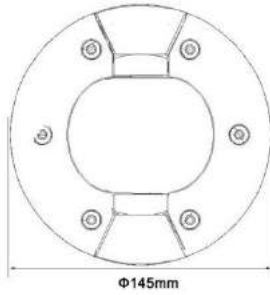
- 2.3.1 Power Supply: Solar Module
- 2.3.2 Current Consumption: 90mA
- 2.3.3 Solar Module Type: 3V 90mA
- 2.3.4 Battery: 1.2V 2000mAh NI-MH battery
- 2.3.5 Lighting Time: 100H after fully charged in flashing mode

2.4 Optical

- 2.4.1 LED Qty: 4 LEDs
- 2.4.2 LED Type: $\varnothing 5\text{mm}$
- 2.4.3 Color Optional: Red, blue, yellow, white, green
- 2.4.4 Visual Distance: 500M



3 Structure Diagram



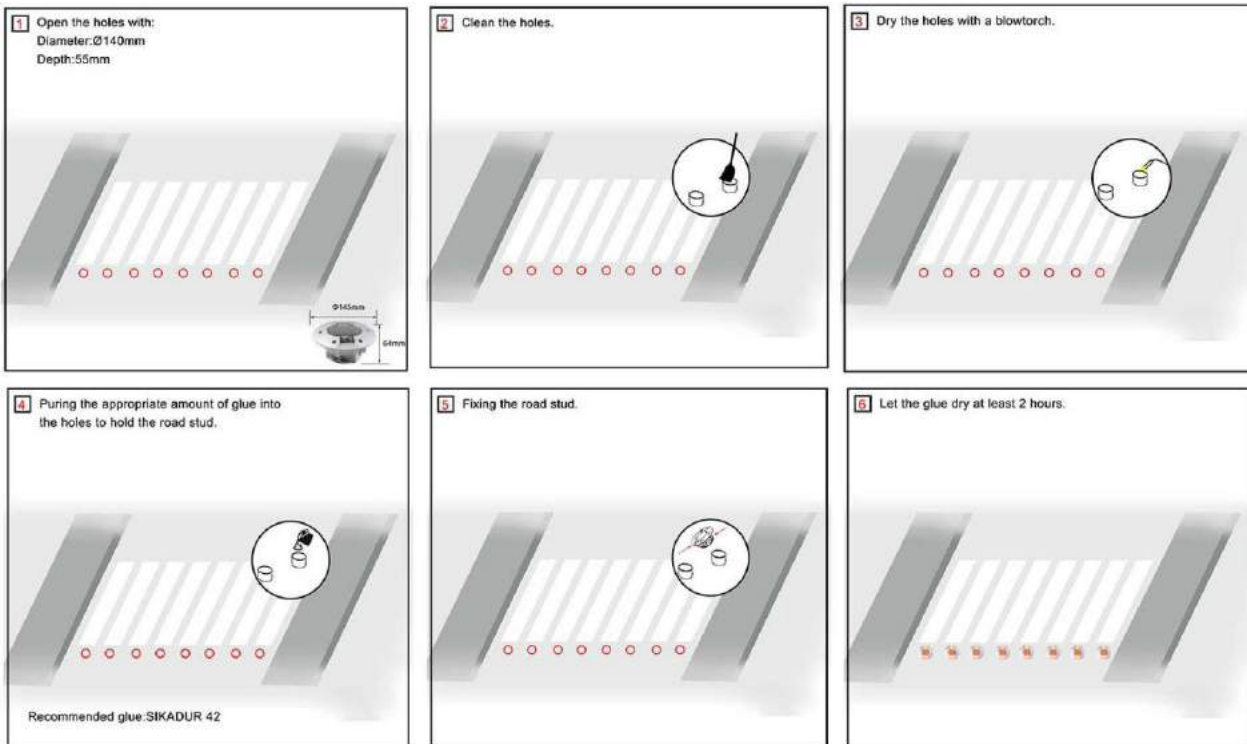
4 Installation

4.1 Applicable Place

- Greenways
- Pedestrian walkway
- Delineation of roads
- Motorways
- Illumination of public spaces (bicycle paths, pedestrian zones, etc ...)
- Decorative illumination

4.2 Installation Method

- 4.2.1 Please place professional isolation facilities before installation for ensuring the safety of workers.
- 4.2.2 The road surface should be level and even ,any repair to the surface should be conducted prior to installation.
- 4.2.3 Boring a specific size hole at the placement location of the road stud that should be $\text{Ø}140\text{mm} \times 55\text{mm}$.
- 4.2.4 Ensure the hole is cleaned of all debris.
- 4.2.5 Use a blowtorch to dry any dampness from the holes, failure to do so may result in the adhesive glue not bonding correctly.
- 4.2.6 Pour the adhesive glue into the hole and locate the road stud so that its lighted side is facing towards to drivers.
- 4.2.7 Inspect studs 2 hours after installation and re-adjust if there has any movement.
- 4.2.8 Inspect after 4 hours and check that all studs are firmly located and show no signs of movement, if all have set correctly re-instate power.



4.3 Installation Considerations

4.3.1 Installation depth 55mm

4.3.2 Other: Ensure any water is removed prior to commencing maintenance.
Use the epoxy supplied for best result.

5 After-sales Services

5.1 Warranty: 1 year

5.2 Safe Storage Remind: Please charge it once for 3 months.

