



# BL-004CA-QT

**EVERY LITTLE LIGHT FOR SAFETY**

# Contents

Contents .....	2
1 Scope .....	3
2 Products Description .....	3
2.1 Features .....	3
2.2 Mechanical .....	3
2.3 Electrical .....	3
2.4 Optical .....	4
3 Structure Diagram .....	4
4 Installation .....	4
4.1 Applicable Place .....	4
4.2 Installation Method .....	5
4.3 Installation Suggestion .....	5

## 1 Scope

This specification covers the detailed Specification and Performance for the following products listed at below:

## 2 Products Description

### 2.1 Features

- 2.1.1 Pedestrians warning:2835 SMD LED boards are toward to the pedestrians.
- 2.1.2 100% waterproof.
- 2.1.3 Low maintenance.
- 2.1.4 Remote controlling.
- 2.1.5 Variable Brightness.
- 2.1.6 Variable distance cables.
- 2.1.7 Operation Mode:Always on, Flashing, Sequential flash,Synchronous flash(Optional).
- 2.1.8 Easy replacement:base (fixed in the pavement), main body (removable).
- 2.1.9 Robust construction, suitable for harsh conditions.
- 2.1.10 Possibility of integration with enforcement systems.
- 2.1.11 LEDs protected by polycarbonate window.
- 2.1.12 Use different LED colors in each window(Optional).
- 2.1.13 Outstanding visibility at the day and night.

### 2.2 Mechanical

- 2.2.1 Product Material: Aluminum
- 2.2.2 LED Protective Cover Material: Polycarbonate Window
- 2.2.3 Mechanical Resistance: 30 Tons Truck
- 2.2.4 Diameter: Ø170mm
- 2.2.5 Product Height(with basement):123mm
- 2.2.6 Rising From Road Surface:0mm
- 2.2.7 Installation Depth: 123mm
- 2.2.8 Product Weight(with basement):2400±100g
- 2.2.9 Waterproof level: IP68
- 2.2.10 Operation Mode: Always on, Flashing, Sequential flash,Synchronous flash (Customizable).
- 2.2.11 Work Temperature: -20°C to+80°C

### 2.3 Electrical

- 2.3.1 Power Supply: DC24V
- 2.3.2 Power Consumption: 3.96W (At flash mode)
- 2.3.3 Current Consumption: 0.29A (At flash mode)
- 2.3.4 Cable Connection: Red Wire (+);Black Wire (-);White&Green Wire(signal line)

**2.4 Optical**

2.4.1 LED Type:

2835 SMD LED Boards				
20°	20°	20°	20°	20°
Red	Yellow	Green	Blue	White
616-618nm	588-590nm	517-520nm	460-462nm	/
25000-30000mcd	25000-30000mcd	15000-20000mcd	16000-18000mcd	16000-18000mcd

2.4.2 Viewing Angle:

2.4.3 Color Optional:

2.4.4 LED Wavelength:

2.4.5 LED Brightness Intensity:

2.4.6 LED Brightness:

Variable Brightness(Max brightness intensity of 2835 SMD LED Boards is about 140cd)

2.4.7 Visual Distance:

500M

**3 Partial Detail Photo**



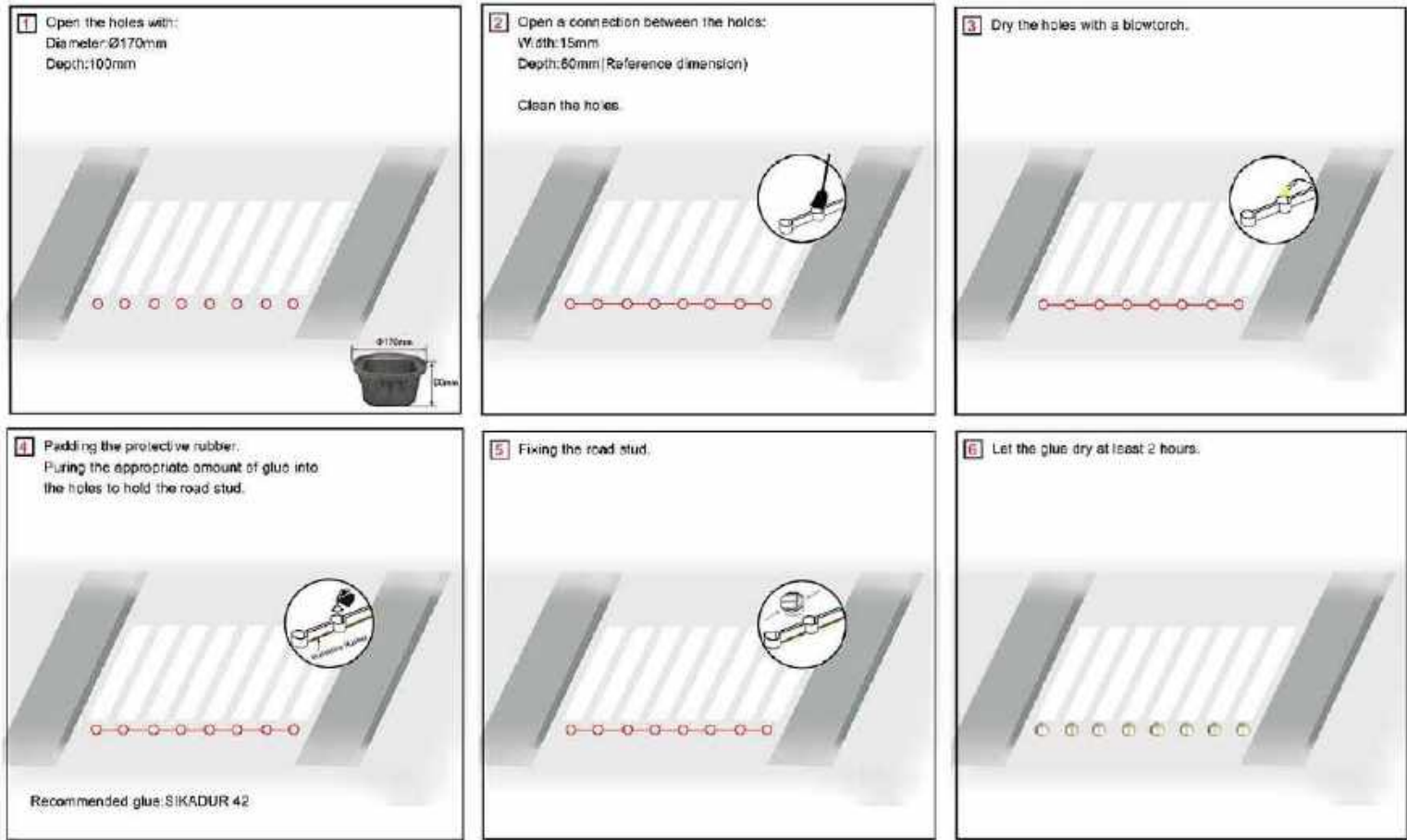
**4 Installation**

**4.1 Applicable Place**

- Highway
- Greenways
- Pedestrian walkway
- Delineation of roads
- Motorways

## 4.2 Installation Method

- 4.2.1 Please place professional isolation facilities before installation for ensuring the safety of workers.
- 4.2.2 Please choose a flat installation location.(Be cautious:You should better straighten the road surface before installation if it was bend,cracked or uneven.)
- 4.2.3 Boring a specific size hole at the placement location of the road stud that should be  $\varnothing 170\text{mm} \times 100\text{mm}$ .
- 4.2.4 Cutting the connection slot between the holes and the reference dimension is width:15mm, depth:60mm(The specific size is adjusted according to the actual situation of the construction site), and then cleaning the placement location in brush.
- 4.2.5 Drying the holes in blowtorch to ensure dryness.
- 4.2.6 Padding the protective rubber into the connection slot.
- 4.2.7 Puring the special glue into the holes, and then firmly mount the road stud on the fixing location & ensure the reflective part is facing the right traffic direction.
- 4.2.8 Inspect the installed studs within 2 hours after installation, ensuring that all the studs are fixed in correct direction and not crooked.
- 4.2.9 Remove the isolation facilities in 4 hours after the studs' installing glue is totally concretionary.



## 4.3 Installation Suggestion

- 4.3.1 Installation Depth: 123mm
- 4.3.2 Maintenance Method: Base (fixed in the pavement), Main body (removable).
- 4.3.3 Other: Pay attention to water resistance during maintenance.  
Please use the devoted epoxy for ultimate protection.