

# BL-010SU

**EVERY LITTLE LIGHT FOR SAFETY**

# Contents

Contents .....	2
1 Scope .....	3
2 Products Description .....	3
2.1 Features .....	3
2.2 Mechanical .....	3
2.3 Electrical .....	3
2.4 Optical .....	3
3 Structure Diagram .....	4
4 Installation .....	4
4.1 Applicable Place .....	4
4.2 Installation Method .....	4
4.3 Installation Considerations .....	5
5 After-sales Services .....	5
5.1 Warranty .....	5
5.2 Safe Storage Remind .....	5
5.3 Work Temperature .....	5

## 1 Scope

This specification covers the detailed Specification and Performance for the following products listed at below:

## 2 Products Description

### 2.1 Features

- 2.1.1 Low maintenance.
- 2.1.2 Robust construction, suitable for harsh conditions.
- 2.1.3 Outstanding visibility during the day and at night.
- 2.1.4 Photocontrol, automatic on at dusk ,off at dawn, save energy, friendly to the environment.
- 2.1.5 External magnet switch(optional):Special design of the internal circuit to make this road stud to be turned on/off by an external mini-magnet, good for long time storing.
- 2.1.6 Operation Mode:Flashing,Steady,Synchronous flash/Sequential flash (optional).
- 2.1.7 Special hard anodization coating available - 3 times durable than normal coating. (optional).
- 2.1.8 Top cover protected by polycarbonate window.
- 2.1.9 Water proof:IP68

### 2.2 Mechanical

- 2.2.1 Material: Aluminum
- 2.2.2 Top Protective Cover Material: Polycarbonate
- 2.2.3 Mechanical Resistance: ≥30 Tons Truck
- 2.2.4 Diameter: Ø137mm
- 2.2.5 Height: 52mm
- 2.2.6 Product Weight: 875g
- 2.2.7 Protection Index: IP68
- 2.2.8 Operation Mode: Flashing,Steady,Synchronous flash/Sequential flash(Customization).

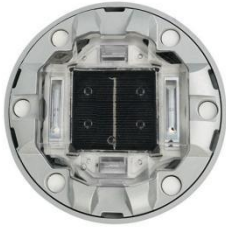
### 2.3 Electrical

- 2.3.1 Power Supply: Solar Panel
- 2.3.2 Current Consumption: 110mA
- 2.3.3 Solar Panel Type: 2.5V 130mA
- 2.3.4 Battery: 1.2V 1200mAh NI-MH battery
- 2.3.5 Lighting Time: 50H after fully charged in flashing mode

### 2.4 Optical

- 2.4.1 LED Qty: 16 LEDs
- 2.4.2 LED Type: High ultra 28\*35 SMD LED
- 2.4.3 Color Optional: Red,blue,yellow,white,green
- 2.4.4 Visual Distance: 500M

**3 Partial Detail Photo**



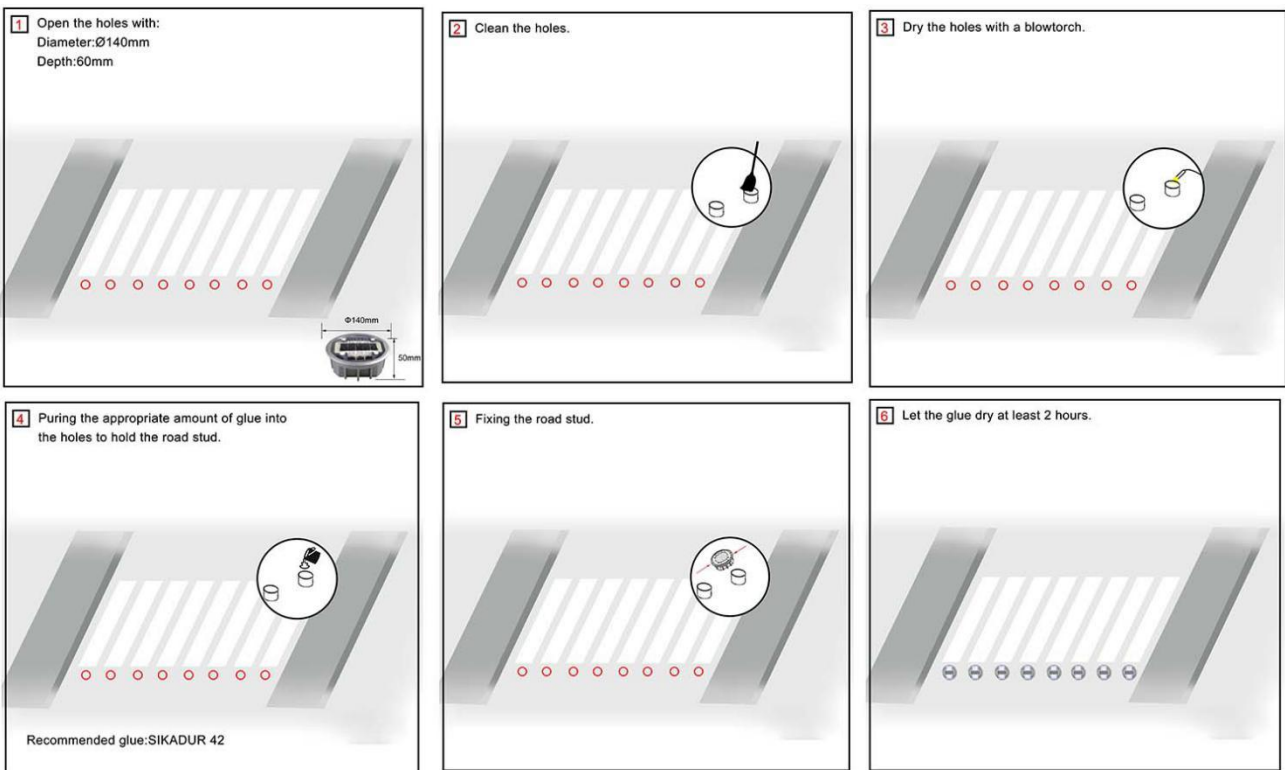
**4 Installation**

**4.1 Applicable Place**

- Greenways
- Pedestrian walkway
- Delineation of roads
- Motorways
- Illumination of public spaces (bicycle paths, pedestrian zones, etc ...)
- Decorative illumination

**4.2 Installation Method**

- 4.2.1 Please place professional isolation facilities before installation for ensuring the safety of workers.
- 4.2.2 Please choose a flat installation location.(Be cautious:You should better straighten the road surface before installation if it was bend,cracked or uneven.)
- 4.2.3 Boring a specific size hole at the placement location of the road stud that should be Ø140mm\*60mm.
- 4.2.4 Cleaning the placement location in brush.
- 4.2.5 Drying the holes in blowtorch to ensure dryness.
- 4.2.6 Puring the glue into the holes,and then firmly mount the road stud on the fixing location & ensure the lights part is facing the right traffic direction.
- 4.2.7 Inspect the installed studs within 2 hours after installation, ensuring that all the studs are fixed in correct direction and not crooked.
- 4.2.8 Remove the isolation facilities in 4 hours after the studs' installing glue is totally concretionary.



### 4.3 Installation Considerations

- 4.3.1 Installation Depth                      60mm
- 4.3.2 Other:
- Pay attention to water resistance during maintenance.
  - Please use the devoted epoxy for ultimate protection.

## 5 After-sales Services

- 5.1 Warranty:                                      1 year
- 5.2 Safe Storage Remind:
- Please charge it once for 3 months.
  - External magnet switch(optional):Special design of the internal circuit to make this road stud to be turned on/off by an external mini-magnet, good for long time storing.
- 5.3 Work Temperature:                         $-20^{\circ}\text{C}$  to  $+70^{\circ}\text{C}$