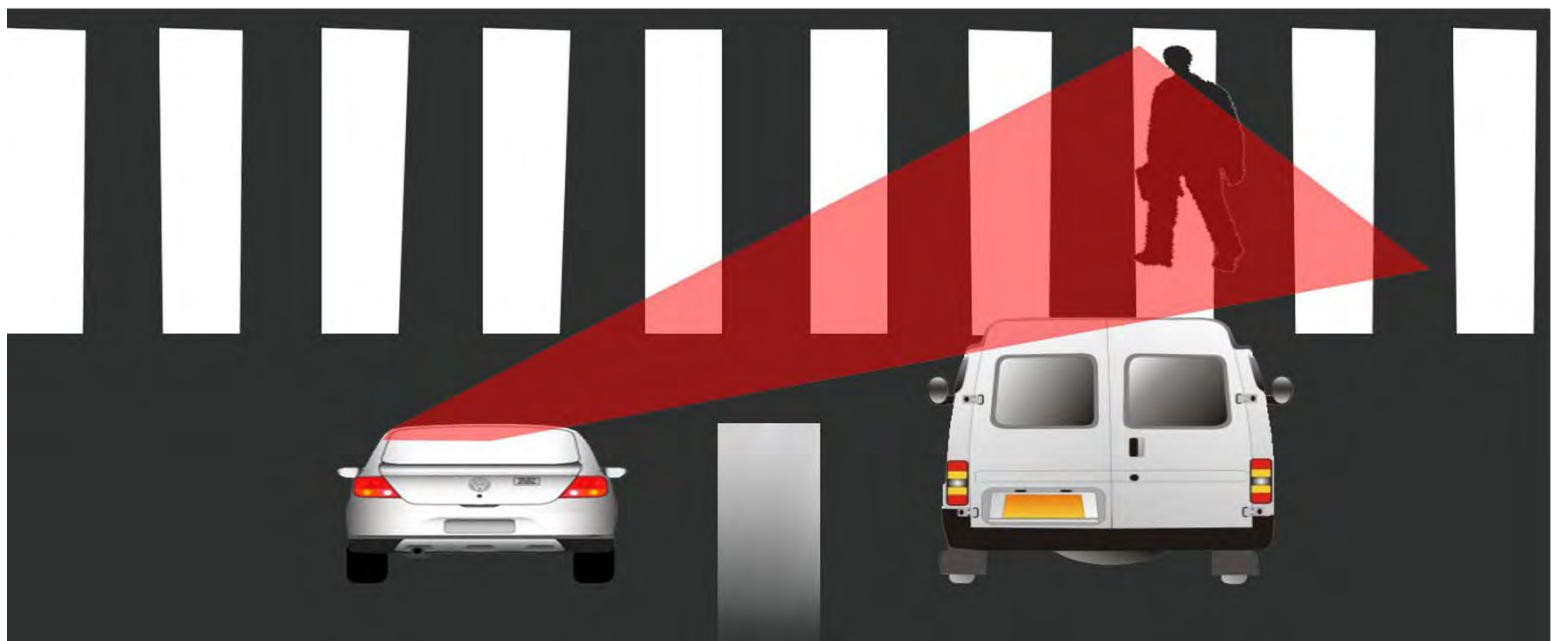


SMART PEDESTRIAN SYSTEM

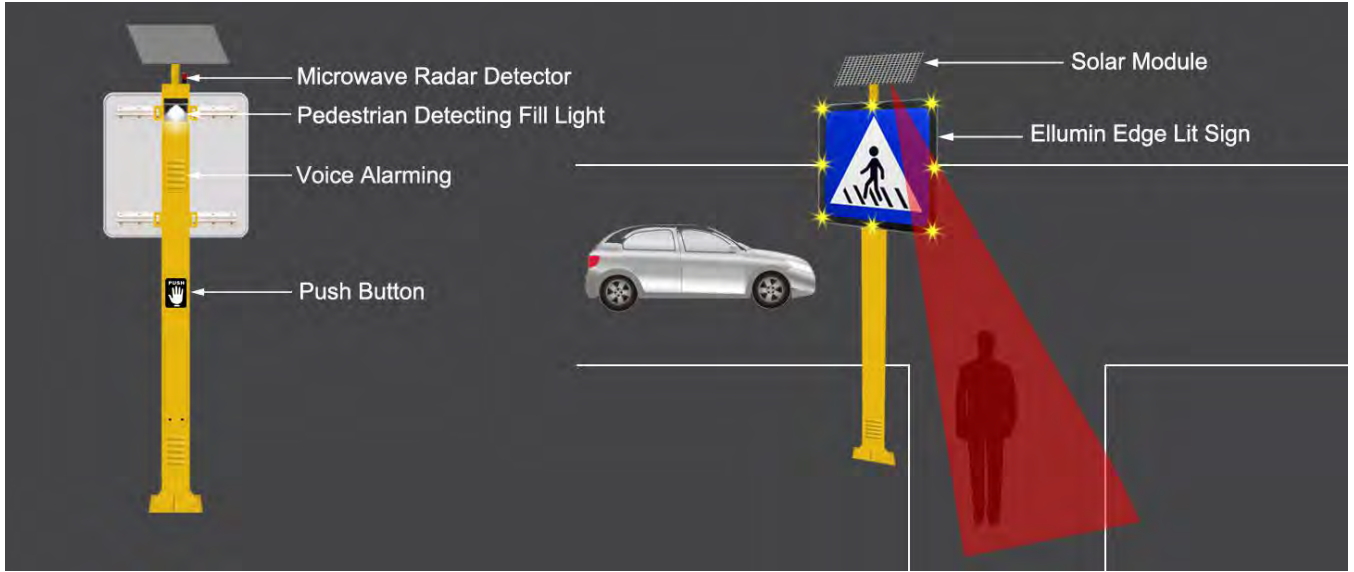
—FORK ROAD TYPE



Contents

CROSSROADS VERSION.....	3
1.FUNCTION.....	3
2.FEATURES.....	3
ACCESSORIES OF CROSSROADS VERSION.....	4
ACCESSORIES-INDUCTION PART.....	4
1.PEDESTRIAN INTELLIGENT INTEGRATED BOLLARD(Main Bollard).....	4
INTELLIGENT PEDESTRIAN SYSTEM CONTROL MODULE.....	4
ACCESSORIES-WARNING PART.....	4
1.EDGE LIT TRAFFIC SIGN.....	4
ACCESSORIES-POWER SUPPLY PART.....	5
1.SOLAR MODULE.....	5
ELLUMIN CLOUD PLATFORM.....	5
DESCRIPTION.....	5
FUNCTION.....	5
CONSTRUCTION DRAWING.....	8
Q & A.....	8

CROSSROADS VERSION



The drivers have blind spots and the traditional pedestrian signs have bad warning effect; These two severe problems have survived for a long time which cause many of the terrifying traffic accidents. ELLUMIN company faces challenges, improves technology, optimizes product for solving remained unsolved traffic problems.

The Smart Pedestrian Crossing Sign adopts a new technology of edge lit. Radar sensing system detect pedestrian movement for actuating warning system & illuminated system.

1.FUNCTION

1.1 At day:

- The system is dormant when doesn't detect pedestrians.
- When the sidewalk system is triggered, the 8 LED lamps in traffic sign flash sync; the voice alarming is turned on.

1.2 At night:

- The system is dormant when doesn't detect pedestrians.
- When the sidewalk system is triggered, the Pedestrian Detecting Fill Light function open, the 8 LEDs in traffic sign flash in sync; the voice alarming is turned on.

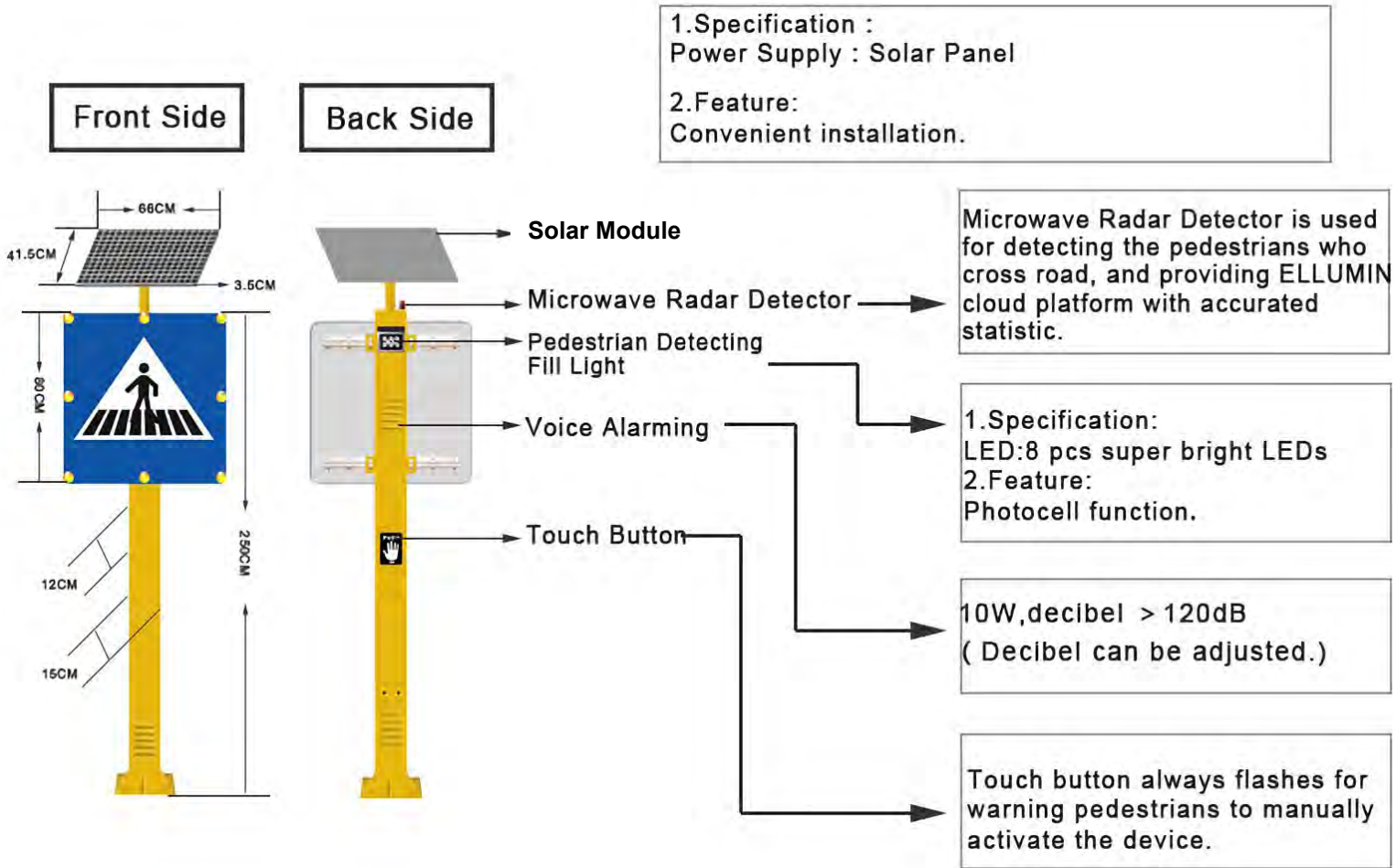
2.FEATURES

- 2.1 Advanced Microwave Radar Detector is used for detecting system.
- 2.2 Edge Lit Sign has flash function which has excellent visibility and outstanding warning effect for drivers.
- 2.3 Voice Alarming can use custom voice for warning drivers and pedestrians.

ACCESSORIES OF CROSSROADS VERSION

ACCESSORIES-INDUCTION PART

1. PEDESTRIAN INTELLIGENT INTEGRATED BOLLARD (Main Bollard)



INTELLIGENT PEDESTRIAN SYSTEM CONTROL MODULE

The control module is for ensuring the system effective operation and upgrading the system operation efficiency. It integrates two core functions in one that receive activation signals from activation equipment and send working instructions to the warning equipment. And it can also satisfy the need of customized functionalities of the system.

ACCESSORIES-WARNING PART

1. EDGE LIT TRAFFIC SIGN



Traditional traffic signs have short visibility distances, and the static warning effect is poor. ELLUMIN company put the edge lit technology on traffic sign, it not only increases the visual distance, but also add flash function to warn drivers yield people who are crossing the crosswalk.

1.1 Specification

- Material: Double layer aluminium-plastic panel & 3M DG³ reflective sheeting & Stainless steel fasteners.
- 8 PCS 1W high power LED lamp.
- Aluminium-plastic panel, durable which is hard to bend.
- With anti-graffiti overlay.
- Size and pattern can be customized.

1.2 Features

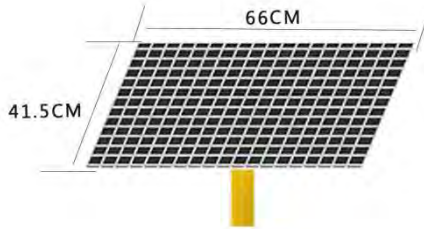
Simultaneous flash LEDs - Greater increases drivers awareness in high-risk, and high-accident intersections.

Slim design: The thickness has no difference with the normal aluminum sign; Convenient installation.

Aluminum wrapping edge - Pattern design: New advanced anti-oxidation Aluminum wrapping edge, 2-3 times durable than old silicon wrapping, effectively extend the life time.

ACCESSORIES-POWER SUPPLY PART

1.SOLAR MODULE



1.1 Specification

- Power supply:DC 12V40W solar module
- Size:66*41.5*3.5cm
- Protection Index:IP67
- Battery:DC12V36AH

1.2 Features

- Convenient installation.
- Suitable for use in rich solar energy areas.
- Not affected by local grid power outages.

ELLUMIN CLOUD PLATFORM

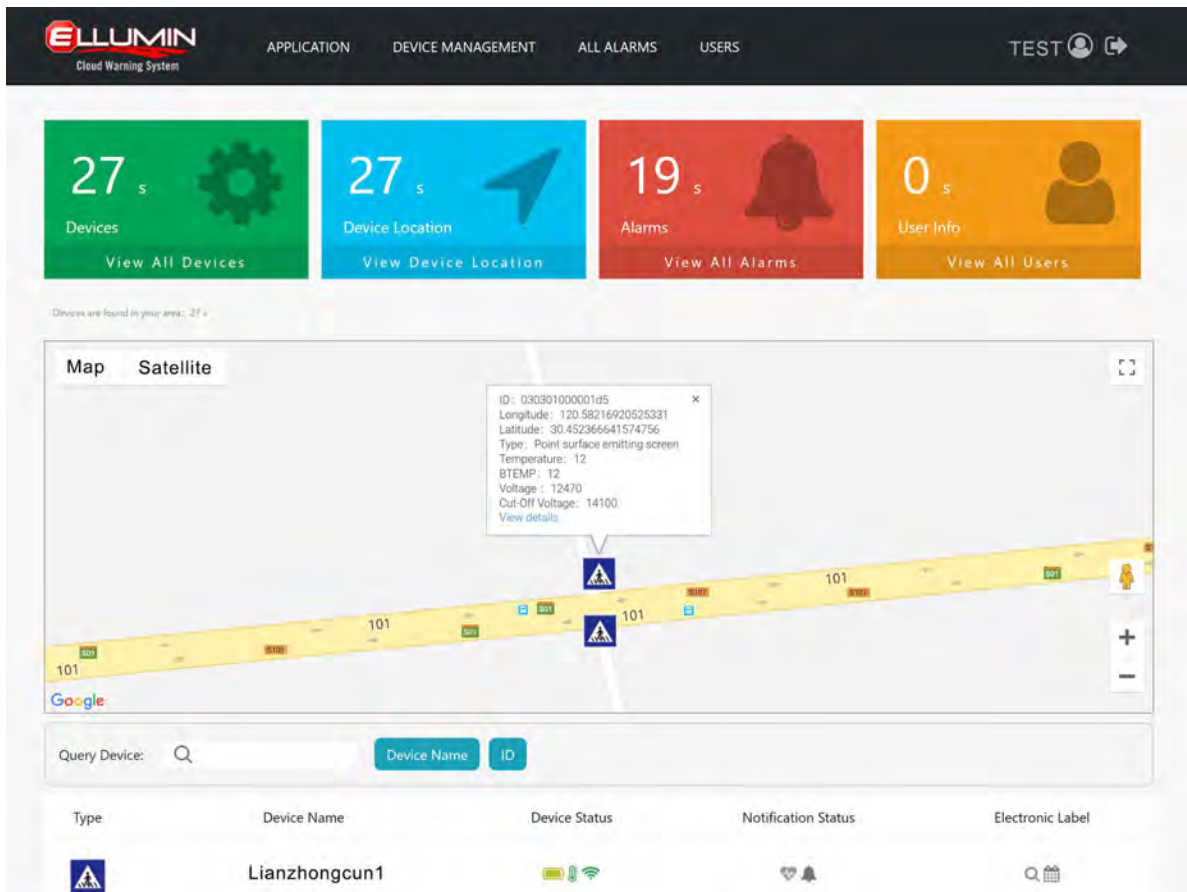
DESCRIPTION

ELLUMIN cloud platform is an important part of the smart city which can monitor the operation of the devices, as well as collect and analyze the devices' statistic for you.

FUNCTION

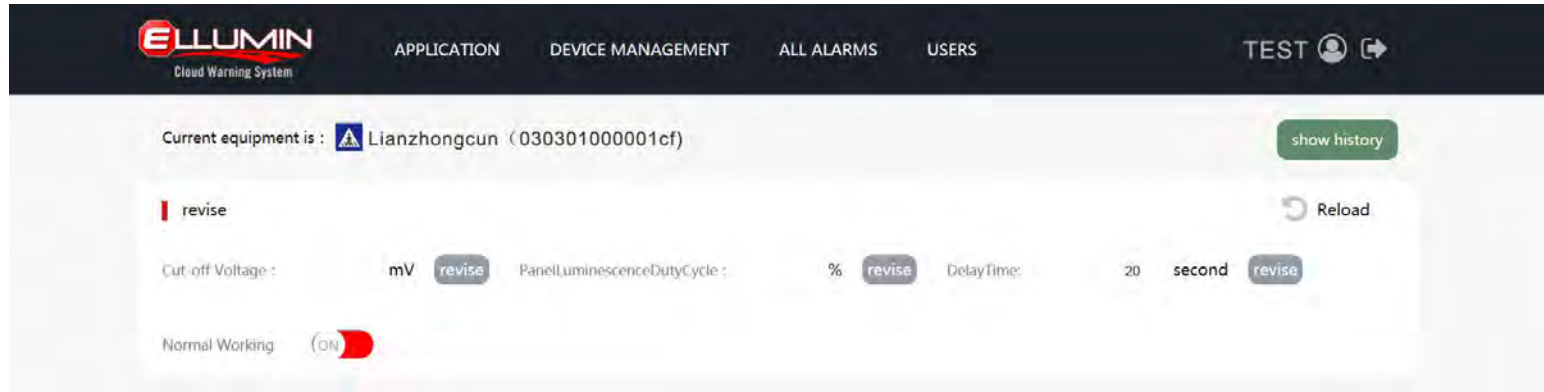
1.MONITORING DEVICE

Monitoring device's operation and display in map pattern, and support to filter the dedicated device.



2.ONLINE CONTROL DEVICE

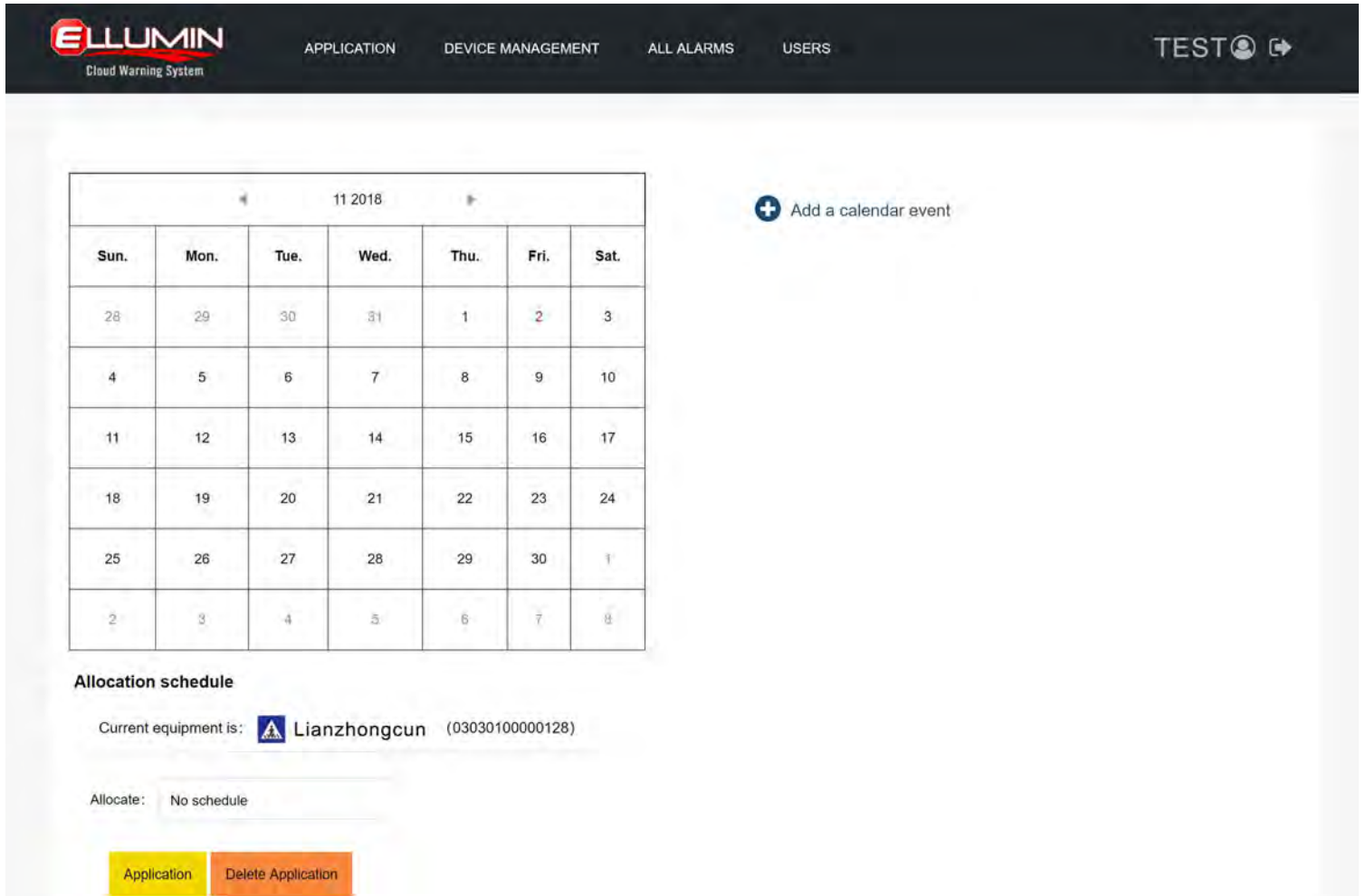
Remotely change the operating status of the device online.



3.PROGRAMMABLE CONTROL

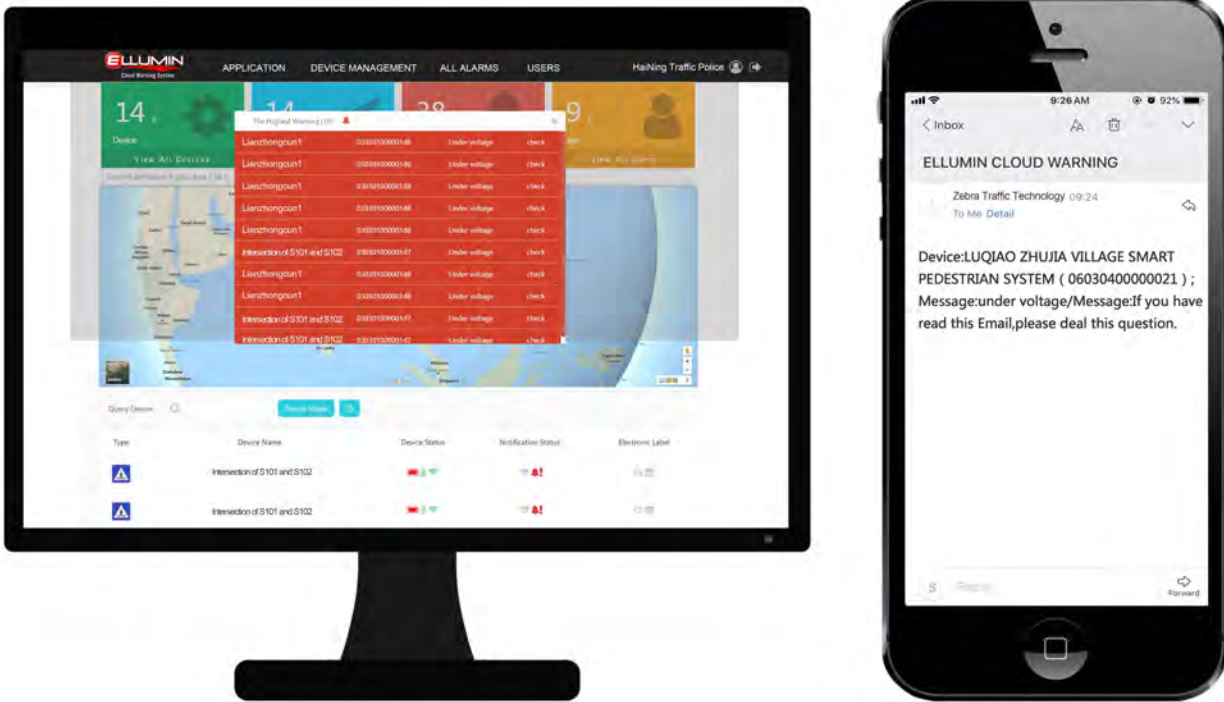
Customize Calendar Editor is easy to schedule Manage devices.

(Based on the Calendar Year with the Ability to Program in Holidays and Daylight Savings Time,Ideal for School, Business and Industrial Facility Work Schedules)



4. EMERGENCY NOTIFICATION

When a traffic emergency occurs or there is something wrong with the device, workers will immediately receive the notifications through E-mail and web page.



5. DATE REPORTING

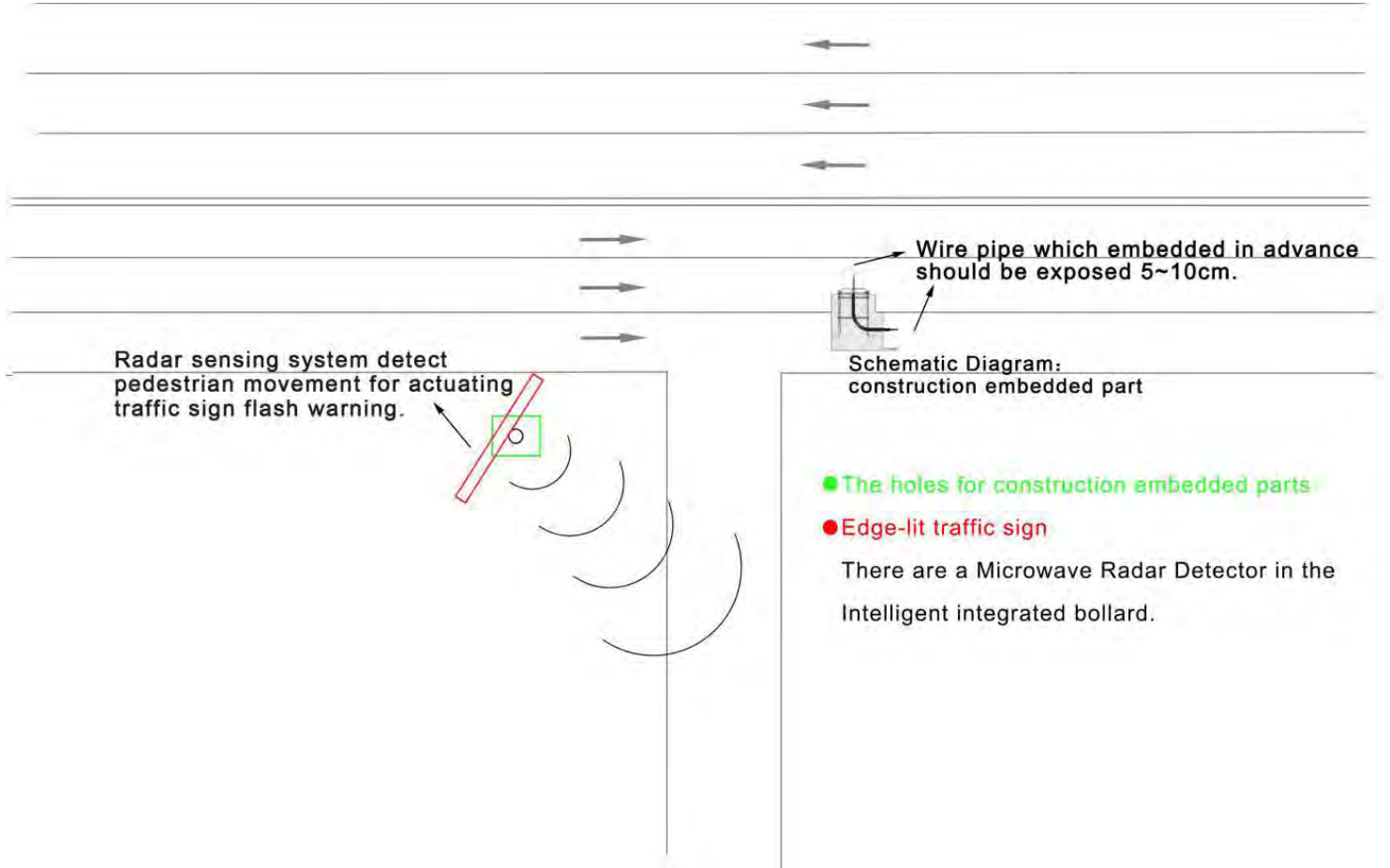
- 5.1 It can generate professional data reports by capturing, filtering, summarizing, analyzing and summarizing the data of the day.
- 5.2 Provide strong data support by historical data exported to EXCEL in chronological order.



Time	electric current (mA)	Delay Time (S)	Duty Cycle (%)	visitors flowrate (...)	UploadInterval(*1...	Temperature(°C)	voltage (v)
2018-11-02 01:41...	0	20	50	0	6	12	12.70
2018-11-02 01:09...	0	20	50	0	6	12	12.72
2018-11-02 00:08...	0	20	50	0	6	14	12.73
2018-11-01 23:07...	0	20	50	6	6	14	12.76

TOTAL ITEM: 244 | 1 2 3 ... 25 NEXT > 10 Item/Page

Export Table



Q & A

Q1.What is the intelligent pedestrian system?

The intelligent pedestrian system can accurately detect the movement of pedestrian when they are crossing the crosswalk to actuate the voice alarm system and the illuminate system(The illuminate system is consist of two parts:Flash pedestrian sign and embedded road studs) .

These two useful system warn drivers to slow down for yielding pedestrians as well as pedestrian should be cautious when cross the zebra crossing.

Q2.How the detection technology to work?

Microwave Radar Detector is used for detecting the pedestrians who cross road,and providing ELLUMIN cloud platform with accurated statistic.

Q3.How long is the construction period?

The construction period is around only 1 day for a two-way four-lane road.

Q4.How about the electrical safety?

We adopt 3M waterproof connector for the electrical safety.